

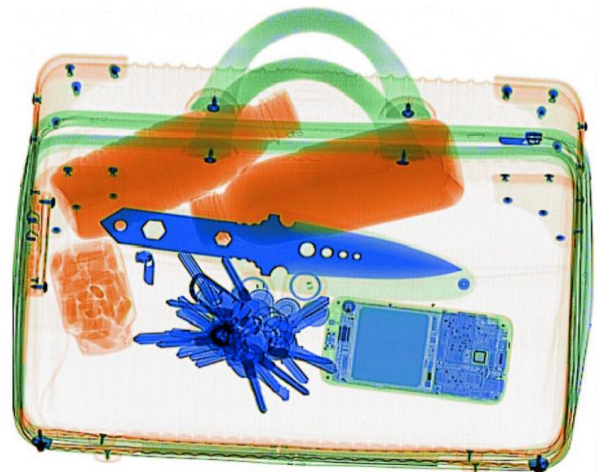


Hand baggage and parcels

The AT6040B is a popular x-ray inspection system with a tunnel opening of 60 cm x 40 cm. It is used widely for screening hand baggage and parcels at all security sites, including airports and customs locations.

Product Highlights

- * Radiation safe
- * High resolution, high penetration and good image quality
- * Multilingual operation
- * Automatic built in test and self diagnosis
- * Threat alert and material classification
- * Energy saving design
- * One key turn off with patent
- * Drugs and explosives detection



Physical Specifications

Tunnel size	613(W)*409.5(H) mm
Unit weight	455 kg
Unit size	2007(L)*844(W)*1234(H) mm
<u>after packed on wooden pallet -</u>	
Gross weight	500 kg
Packing size	220*101*156cm

General Specifications

Conveyor Speed	0.20 m/s forward or backward
Conveyor height	663.5 mm
Conveyor capacity	165 kg
Frame design	304 stainless steel, 2-5 mm cold rolled plate and square steel, double-layer staggered lead impregnated safety curtain

X ray dose/inspection	≤4μSv
X ray leakage	≤1μSv/h at any point 5 cm outside the external surface. FDA standard is ≤5μSv/h
Steel penetration	30 mm guaranteed
Wire Resolution	AWG40 guaranteed
Penetration Resolution	AWG34 guaranteed
Spatial resolution:	1.0mm Horizontal, 1.0mm Vertical
Power Consumption	max. 0.8KW
Noise	<60 dB
Film Safety	Guarantee ASA/ISO1600 Film

X-ray Generator (single)

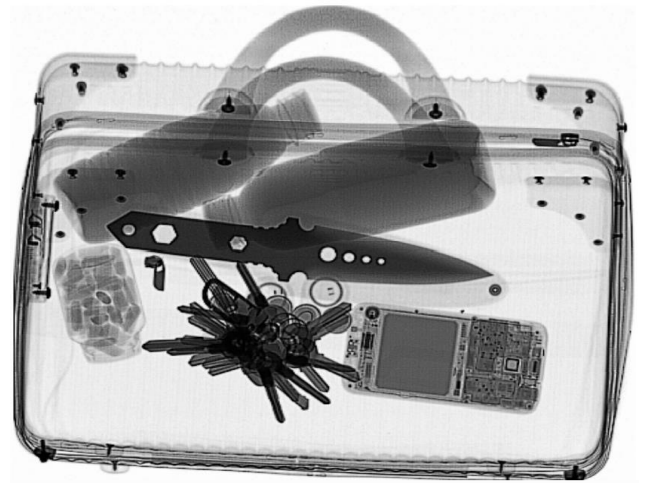
Anode Voltage	140 KV
Beam direction	Upward
Tube Cooling / Duty Cycle	Sealed oil cooling /100%

Computer and other

Monitor	One 21.5-inch LCD monitor, 1920*1080
Console/Tray	Security Console with Locking Mechanism
CPU	Intel (R) i3 (R) 3.3GHz
RAM	8GB
Hard Disk	2T
Platform	Windows 10
Electric roller	Three-phase
Interface	Pre-Installed GUI Software of X-Ray Baggage Scanner

Operating Environment

Operating temperature /Humidity	0°C-40°C 5%-95%(non-condensing)
Storage Temperature /Humidity	-20°C to 60°C 5%-95%(non-condensing)
Operation Power	220V(+10% ~ -15%) 50±3Hz Options: 110-120V, 230-240V, 60Hz



Imaging System

Detector	1152 channels in an L-Shaped Array
Image processing	Color / black and white imaging, organic highlight, inorganic highlight, pseudo color, edge enhancement, suspicious organic enhancement, super enhancement, reverse/invert color, grayscale scanning, brighten, darken, variable absorption rate + / -, zoom in / out, maximum 64x,
Explosives & Narcotics Detection	Suspicious organics highlight(atomic number Zeff=7,8,9)
Suspicious Alarm	Alarm and box line the suspicious objects including hard to penetrate material, explosives and drugs
Threat Image Projection(TIP)	Inserting fictional, but realistic images of threat items into baggage during screening operation, for maintenance of vigilance, as well as training and assessment of image identification capability
Image pullback	30 images
Image Archive	Up to 50,000 images stored automatically, enable transferring to USB disk, and converting to JPG, BMP and other formats
Miscellaneous Functions	Time/date display, Baggage counters, user management, object classification & Colors system-on/x-ray-on timers, power on self test, startup self diagnostic facilities, bidirection scanning, forced scanning, image search and export, system setting, system log, system standby and stimulant training,etc.
Options	UPS, console, additional roller table, intelligent roller to sense the bag and move the belt, AI function to identify knives, guns, bullets, fireworks, etc.

