



Introduction

AT3000 is mobile under vehicle surveillance system (UVSS) for under vehicle security check. It helps detect contraband and illegal rendition under the vehicle quickly. It is faster and more accurate than the traditional under vehicle inspection mirror, greatly improved the speed and accuracy of the vehicle safety inspection, and saved time and manpower.

AT3000 is used at the entrance of the parking lot and important government buildings, road traffic checkpoints, customs, border inspection ports, and big event venues. The system is easy to move and install.

Product highlights

- Portable, Compact design and easy/quick installation
- Advanced linear CCD scanning technology (Area Scanning, Line Scanning & Point Scanning)
- High resolution complete color image of under the vehicle
- Weather proof scanning unit (IP68 the highest level)
- Anti-fog function
- Multilingual Graphical User Interface(GUI)
- Option: Automated License Plate Reader(ALPR)
- System Language is English

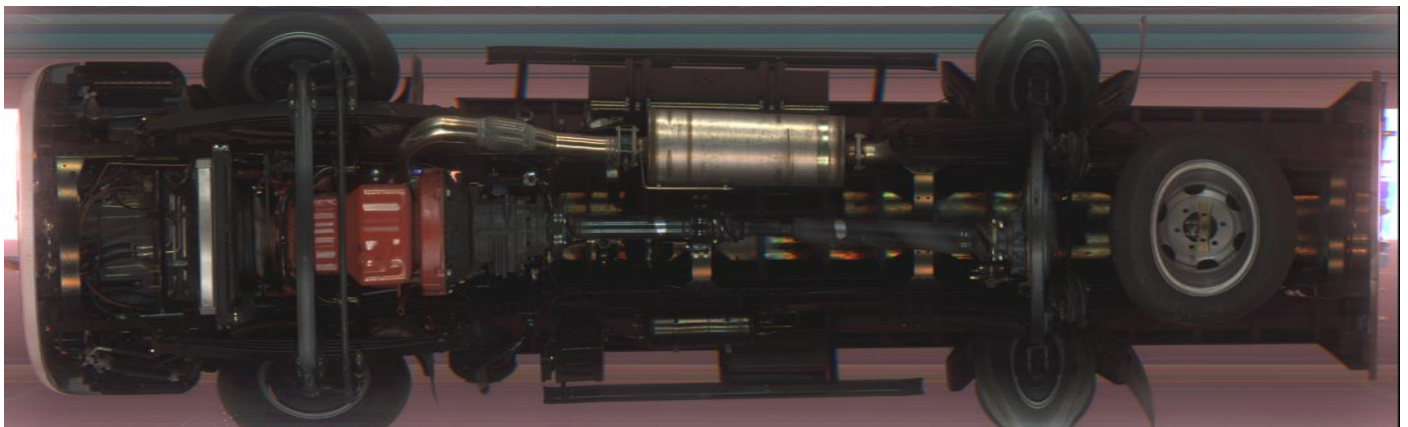
CCD Scanning

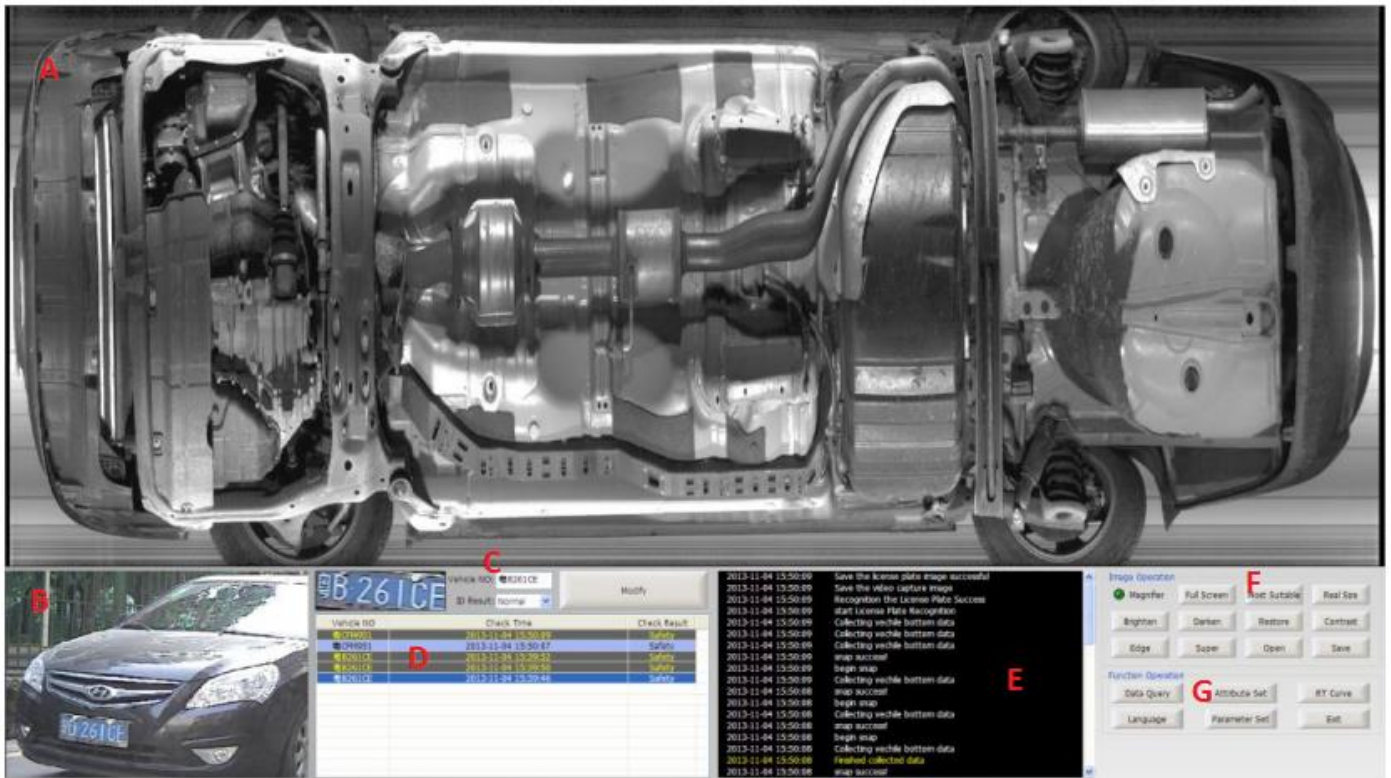
- Maximum scanning rate: 18kHz
- Vehicle Detection speed: 1-60 km/h, recommend < 30 km/h
- Field of View angle: 170 degrees
- Scanner data line: 10 meters(length customizable)
- Lighting: 160W
- Lighting components: 2 single sealed LED surface light sources, life 50000h
- Load-bearing weight: 30T
- Waterproof grade: IP68 (the highest level)
- Weight of the scanning device: 28KG
- Size of the scanning device: 450 x 400 x 88 mm

Imaging system

- Technology: Linear array CCD scan technology and dynamic imaging of BW/color
- Scanning/Vertical resolution: ≥ 4096 pixels CCD
- Imaging store and Load speed: <1 second
- Image display mode: Large-format horizontal display;
- Image storage format: Standard BMP or JPEG
- System interface language: can be customized
- Image data transmission: network RJ45
- Scene image display: ≥ 1 channel
- Image search: Retrieve the image by date, time, license plate number, and images.
- Image resolution: 12000 x 6144
- Automatic scan: Display the image in 1s after the vehicle passes at a speed of 1-65km/h
- Automatic image storage: Save no less than 10,000 pictures and delete the expired pictures automatically
- Imaging function: Adjust saturation, contrast, balance and sharpening, zoom in and out (1-16), and local enlargement

Scanned image





- A. Under vehicle image display area: real-time display of vehicles at the detected image, historical images, and bottom of the vehicle underbody after treatment images.
- B. Live video area: Via external plate camera, display video which is automatically capture vehicle license plate images when the vehicle passing the detection zone.
- C. License plate number information display area: Displaying the detected vehicle license plate capturing photos with automatic identification of the results. Click [Modify] button can modify the number of recognition errors.
- D. Vehicle information list: Checking vehicle information in all day, including license plate number, the checking time, vehicle surveillance results.
- E. Real-time log information list: real-time display of the region need to run the process produces some log information to facilitate the use of personnel or maintenance personnel system view real-time operation of the system state.
- F. Image manipulation functional areas: the image to zoom; brighten, darken; edge enhancement, super-enhanced operation.
- G. Functional operating areas: the license plate camera and used to set the relevant parameters linear array camera, as well as the system language, real-time curve, historical data query functions.

Computer and other

- Monitor One 22-inch true color LCD monitor (Full HD)
- Console A console which can lock the display and keyboard
- CPU Intel i5 processor
- RAM DDR3, 4GB RAM
- Hard Disk 1TB High Speed Hard Disk
- Graphics Card: DDR3, 192BIT Independent Graphics Card
- Platform Windows OS License (Genuine)
- Ports 1x LAN, USB

Operating environment

- Operating temperature: -25 ° C ~ 60 ° C
- Storage temperature: -40 ° C ~ 75 ° C
- Power supply: AC110-240V 50~60Hz ±3Hz

Component

No.	Sub system	Qty	Hardware
1	Mobile vehicle scanning equipment	1 set	Camera
			Scanner frame
			Lighting system
			Vehicle sensor
2	Operating box	1 set	System host
			22 inch monitor
3	Video monitoring	1 set	ANPR Camera
		1 set	ANPR Camera Tripod
4	Build-in Cable connection of ANPR Camera	10 meters	
5	Pre-Installed GUI based Under vehicle surveillance system software	1 set	
6	Pre-Installed License plate number recognition system	1 set	
7	Tools with Box	1 Set	
8	Cable Protector Speed Ramp	2 Pcs	
9	Wheeled Storage Case for whole system	1 Set	
10	Operation & Maintenance Manual	1/1 Set	



Packing size

85x65x97cm 0.53CBM 95kg

Reference

